

# 4Runner

## Pocket Owner's Manual




If you have any questions or comments  
please contact the Toyota Customer  
Assistance Center at 1-800-331-4331,  
or visit our informative, interactive  
Web site at <http://www.toyota.com>

• • •

©1999 Toyota Motor Sales, U.S.A., Inc.

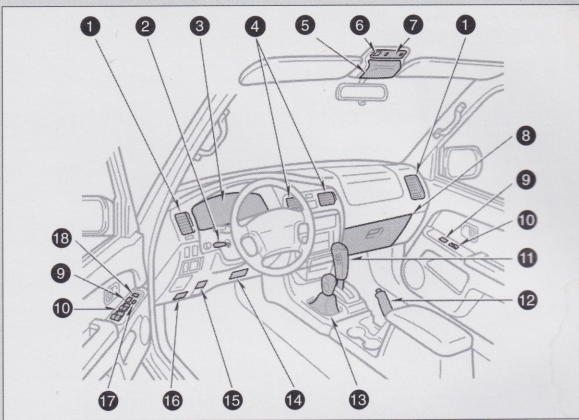
00400-POM00-4RUN



 **TOYOTA**

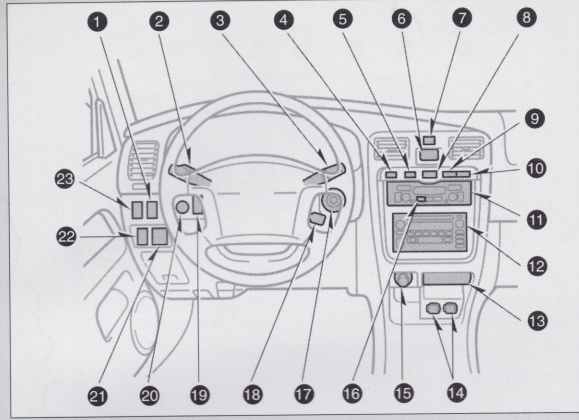
# INSTRUMENTS & CONTROLS

## Instrument panel overview



- 1 Side vents
- 2 Tilt steering lock release lever\*
- 3 Instrument cluster
- 4 Center vents
- 5 Garage door opener box or eyeglass holder
- 6 Electric moonroof switch\*
- 7 Personal lights
- 8 Glovebox
- 9 Power door lock switches\*
- 10 Power window switches\*
- 11 Automatic transmission selector lever or manual transmission gear shift lever
- 12 Parking brake lever
- 13 Front drive control lever\*
- 14 Lower vent
- 15 Hood lock release lever
- 16 Fuel filler door opener
- 17 Window lock switch\*
- 18 Power rearview mirror control switch (with power windows)\*

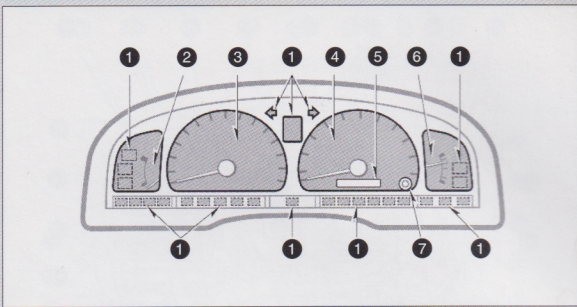
\*If installed



- 1 Clutch start cancel switch\*
- 2 Headlight and turn signal switch/front fog light switch\*
- 3 Wiper and washer switches
- 4 Back window/rearview mirror defoggers switch\*
- 5 Driving pattern selector button\*
- 6 Clock\*
- 7 Emergency flasher switch
- 8 Power back window switch
- 9 Theft deterrent and engine immobilizer system indicator light\*
- 10 Front passenger's seat belt reminder light
- 11 Air conditioning/heating controls\*
- 12 Car audio\*
- 13 Ashtray
- 14 Power outlets
- 15 Cigarette lighter
- 16 "OUT/T" (Outside temperature) button\*
- 17 Ignition switch
- 18 Cruise control switch\*
- 19 Rear differential lock switch\*
- 20 Instrument panel light control knob
- 21 Power rearview mirror control switch (without power windows)\*
- 22 Power back window lock switch (without power window)\*
- 23 Back door lock switch (without power door lock)\*

\*If installed

## Instrument cluster overview



- ① Service reminder indicators and indicator lights
- ② Engine coolant temperature gauge
- ③ Tachometer
- ④ Speedometer
- ⑤ Odometer and two trip meters
- ⑥ Fuel gauge
- ⑦ Trip meter reset knob

## Indicator symbols on the instrument panel

- BRAKE Brake system warning light <sup>1</sup>
- Driver's seat belt reminder light <sup>1</sup>
- PASSENGER Front passenger's seat belt remainder light <sup>1</sup>
- Discharge warning light <sup>1</sup>
- Low oil pressure warning light <sup>1</sup>
- CHECK Malfunction indicator lamp <sup>1</sup>
- Low fuel level warning light <sup>1</sup>
- ABS (Type A) Anti-lock brake system warning light <sup>1</sup>
- ABS (Type B) Anti-lock brake system warning light <sup>1</sup>

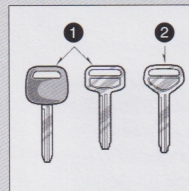
### CAUTION

When the anti-lock brake system (ABS) function is in action, you may feel the brake pedal pulsating and hear a noise. In this situation, to let the anti-lock brake system work for you, just hold the brake pedal down more firmly. Do not pump the brake. This will result in reduced braking performance.

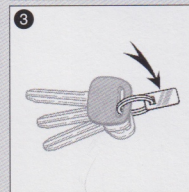
- Open door warning light <sup>1</sup>
- SRS warning light <sup>1</sup>
- A/T P Unengaged "Park" warning light <sup>1</sup>
- A/T OIL TEMP Automatic transmission fluid temperature warning light <sup>1</sup>
- Low windshield washer fluid level warning light <sup>1</sup>
- Turn signal indicator lights
- Headlight high beam indicator light
- O/D OFF Overdrive-off indicator light
- ECT PWR Drive pattern ("PWR" mode) indicator light
- PRN D 2 L Automatic transmission indicator light
- Four-wheel drive indicator light
- RR DIFF LOCK Rear differential lock indicator light
- CRUISE Cruise control indicator light <sup>2</sup>

- 1 For details, refer to "Service reminder indicators and warning buzzers", Section 1-5, 2000 Owner's Manual.
- 2 If this light flashes, refer to "Cruise control", Section 1-6, 2000 Owner's Manual.

## Keys (without engine immobilizer system)



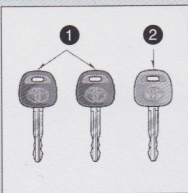
- ① **Master key** Works in every lock.
- ② **Subkey** Will not work in the glove-box.



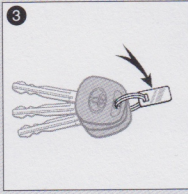
- ③ **Key number plate** Your key number is shown in the plate; keep it in a safe place.

Refer to your *Owner's Manual* for more details.

## Keys (with engine immobilizer system)



- 1 **Master key (black)** Works in every lock.
- 2 **Subkey (gray)** Will not work in the glovebox.

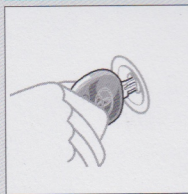


- 3 **Key number plate** Your key number is shown in the plate; keep it in a safe place.

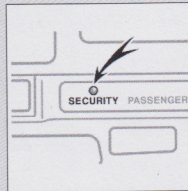
Refer to your *Owner's Manual* for more details.

Both keys contain transponder chips and electronic codes. Be careful not to lose these keys; only your dealer can make duplicate keys that will contain the appropriate chips and codes.

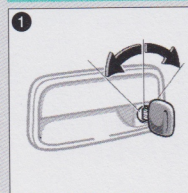
## Engine immobilizer system (if installed)



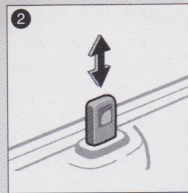
The engine immobilizer system is a theft prevention system. The engine will start only when the electronic code in the key corresponds to the registered ID code for the vehicle. The system sets automatically when the key is removed from the ignition switch.



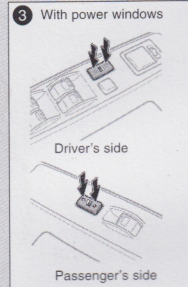
## Doors



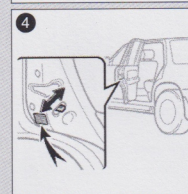
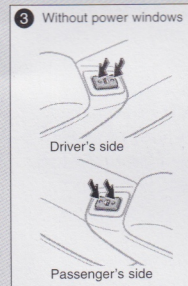
- 1 **For power door lock system (if installed)** Turn the key once to unlock the driver's door and twice in succession to unlock all doors simultaneously.



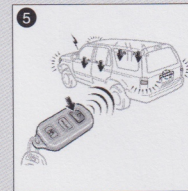
- 2 **With inside lock button** Push the button downward to lock. Pull the button upward to unlock.



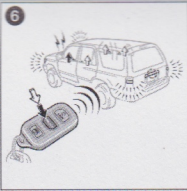
- 3 **With power door lock switch** Push the switch on the front side to lock or on the rear side to unlock.



- 4 **Rear door child-protectors** Move the lever to "LOCK".



- 5 **Wireless remote control (if installed)** To lock and unlock all doors, push the "LOCK" or "UNLOCK" switches of the transmitter.

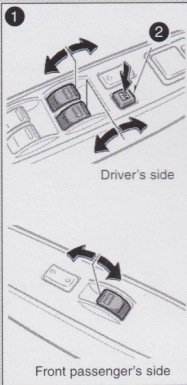


6 Pushing the UNLOCK™ switch twice within 3 seconds unlocks all doors simultaneously.



7 “Panic” switch Pushing the “PANIC” switch blows the horn and flashes exterior lights. Use it in case of an emergency to attract attention and summon help.

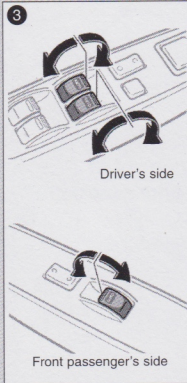
### Power windows (if installed)



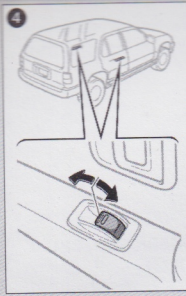
The power windows work when the ignition switch is in the “ON” position.

1 **To open driver's and front passenger's windows** Lightly push down on the switch to open. Pull up on the switch to close.

2 **Window lock switch** Push in the window lock switch, and passengers' windows cannot be operated.

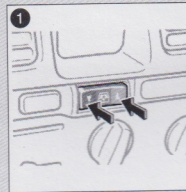


3 **For automatic opening/closing** Push the switch completely down or pull it completely up, and then release it.



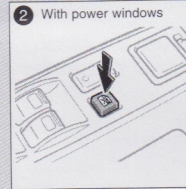
4 **Rear passengers' windows** Push down the switch to open. Pull up the switch to close. The driver's door also has switches that control each passenger's window.

### Power back window

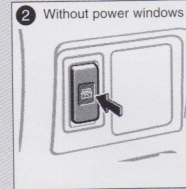


Use the inner switch on the center console or outer switch on the back door.

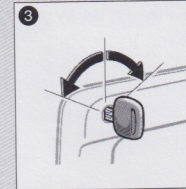
1 **Operating from inside** Push the switch “▼” to open and “▲” to close.



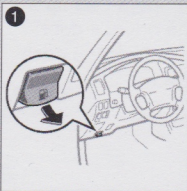
2 **Window lock switch** Push in the window lock switch, and the back window cannot be operated.



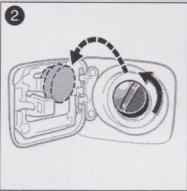
3 **Operating from outside** Turn and hold the key for a few seconds. Turn the key counterclockwise to open and clockwise to close.



## Fuel tank

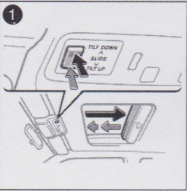


- 1 To open the fuel filler door, pull the lever up.



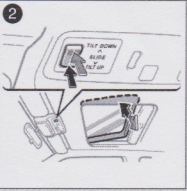
- 2 To remove the fuel tank cap, turn it slowly counterclockwise.

## Electric moonroof (if installed)



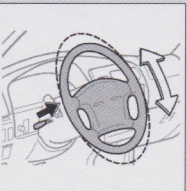
Use the switches beside the personal light. The ignition switch must be "ON".  
**Sun shade operation** Open or close manually.

- 1 **Sliding operation** Push the switch on the " ^ " side to open and on the " v " side to close.



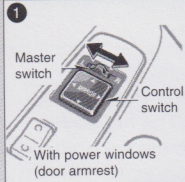
- 2 **Tilting operation** Push the switch on the "TILT UP" side to tilt up and on the "TILT DOWN" side to lower.

## Steering wheel

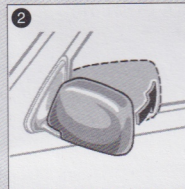
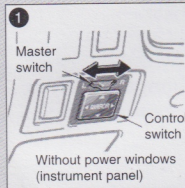


**To change the steering wheel angle**  
Hold the wheel, pull the lever, tilt to the desired angle and release the lever.

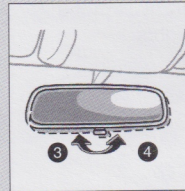
## Mirrors



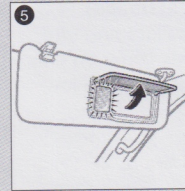
- 1 **Power rearview mirror control** To select the mirror to be adjusted, place the master switch at "L" (left) or "R" (right). Push the control switch in the desired direction.



- 2 **Folding rearview mirror** Push backward to fold the rearview mirror for parking in restricted areas.

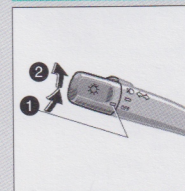


- Anti-glare inside rearview mirror**
- 3 Set the lever at position 3 for day-light driving.
  - 4 Set the lever at position 4 for night driving



- 5 **Vanity mirror** Swing down the sun visor and open the cover to use.

## Lights & turn signals



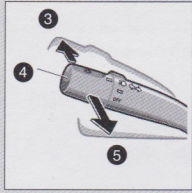
### Headlights

- 1 **Position 1** Twist the lever knob for parking, tail, license plate, side marker and instrument panel lights.
- 2 **Position 2** Twist the lever knob for headlights and all of the above.

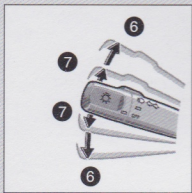
### Daytime running light system

Headlights turn on automatically when the parking brake is released with the engine started.

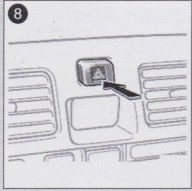
continued



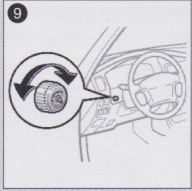
**3 High beams** For high beams, turn the headlights on and push the lever away to position 3.



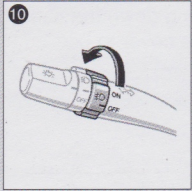
**6 Turn signals** Push the headlight/turn signal lever up or down to position 6.



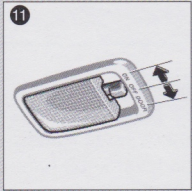
**8 Emergency flashers** Push the switch as illustrated.



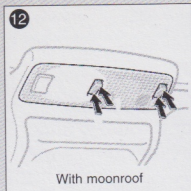
**9 Instrument panel light** Turn the knob to adjust the lights.



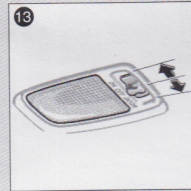
**10 Front fog lights (if installed)** Twist the band of the headlight and turn signal lever. They will come on only when the headlights are on in low beam.



**11 Interior lights** Slide the switch to "ON" (light on all the time), "OFF", or "DOOR" (light goes on when door is opened).

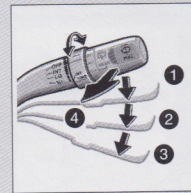


**12 Personal light** Push the switch to turn the light on or off.



**13 Luggage compartment light** Slide the switch as shown. Works similar to interior light.

### Windshield wiper & washer



#### Intermittent type

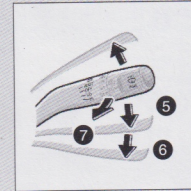
Turn the key "ON".

**1 Position 1** Use for intermittent speed. Twist the "INT TIME" band to adjust the wiping time interval.

**2 Position 2** Use for slow speed.

**3 Position 3** Use for fast speed.

**4 Washer fluid** Pull the lever toward you.



#### Mist type

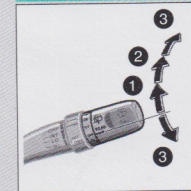
Turn the key "ON".

**5 Position 5** Use for slow speed.

**6 Position 6** Use for fast speed.

**7 Washer fluid** Pull the lever toward you.

### Back window wiper & washer



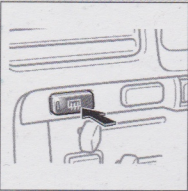
Turn the key "ON".

**1 Position 1** Use for intermittent speed.

**2 Position 2** Use for normal speed.

**3 Washer fluid** Twist the knob upward or downward (position 3).

## Back window defogger



Turn the key "ON".

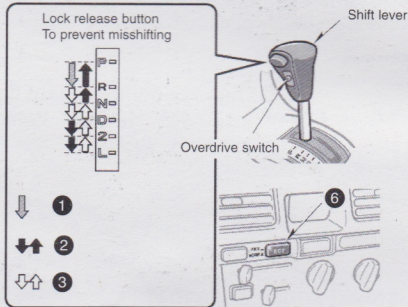
**To turn on** Push the switch.

**To turn off** Push the switch again.

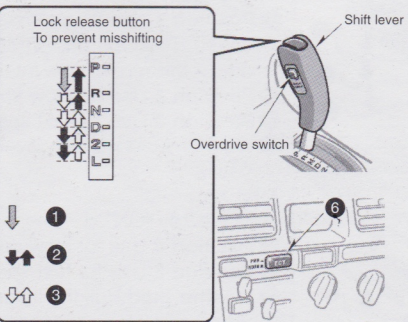
**NOTE:** On some models, heater panels in the outside rearview mirrors will clear the surface.

## Automatic transmission

Two-wheel drive



Four-wheel drive



**Lock release button** To prevent misshifting

- P- Parking, engine starting and key removal
- R- Reverse
- N- Neutral
- D- Normal driving (with overdrive on)
- 2- Stronger engine braking
- L- Maximum engine braking

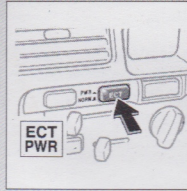
- 1 With the brake pedal depressed, shift while holding the lock release button in. (The ignition switch must be in "ON" position).
- 2 Shift while holding the lock release button in.
- 3 Shift normally.

**Overdrive switch** For selecting either three-speed or four-speed transmission operation.

- 4 Overdrive is always on when you start the engine.

Overdrive turns off when you push the overdrive switch and turns back on when you push the switch again.

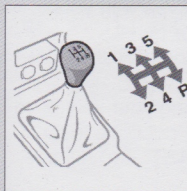
- 5 "O/D OFF" indicator light (shows overdrive OFF).



- 6 **Drive pattern selector button** For selecting a driving pattern suited to existing drive conditions. Push the button to select "NORM" (Normal) mode or "PWR" (Power) mode. "PWR" mode indicator light shows driving pattern selector is in "PWR" mode.

Refer to your *Owner's Manual* for more details.

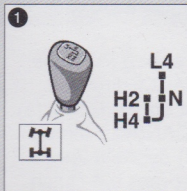
## Manual transmission



The shift pattern is used as illustrated.

Refer to your *Owner's Manual* for more details.

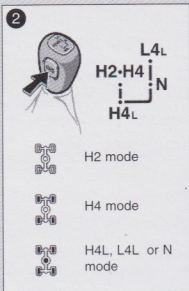
## Four-wheel drive system



- 1 **Front drive control (lever type)**

continued

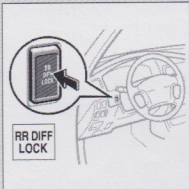




## ② Front drive control (lever/button type)

Refer to your *Owner's Manual* for more details.

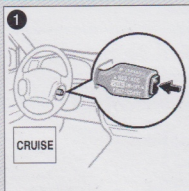
### Rear differential lock system (if installed)



For use only when wheel spinning occurs in a ditch or on a slippery or ragged surface.

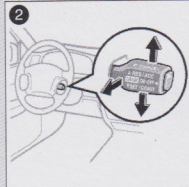
- To lock** Push the switch.
- To unlock** Push the switch again.

### Cruise control (if installed)



Cruise control allows you to cruise at a speed over 25 mph, even with your foot off the accelerator pedal.

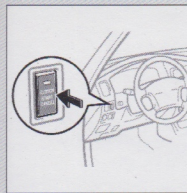
- ① **To turn on** Press the "CRUISE ON-OFF" button.
- ② **To set a speed** Bring your vehicle to the desired speed, push the lever down to "SET/COAST" and release it.



- To change the speed** Tap the lever up or down for faster or slower speed. **NOTE:** Each tap changes the set speed by one mph.
- To resume a preset speed** Push the lever up in the "RES/ACC" direction.
- To cancel the preset speed** Either (a) pull the lever in the "CANCEL" direction and release it, (b) depress the brake pedal, or (c) depress the clutch pedal (manual transmission only).

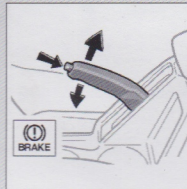
Refer to your *Owner's Manual* for more details.

## Clutch start cancel switch (four-wheel drive models, manual transmission)



Push the switch with the ignition on to crank the engine without depressing the clutch pedal. The switch automatically turns off when the ignition is off.

## Parking brake



Firmly apply the parking brake to avoid inadvertent creeping.

- To set** Pull up the lever.
- To release** Pull up the lever slightly, press the thumb button, and lower.

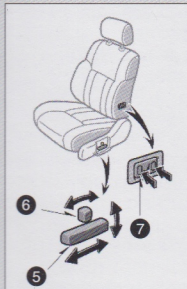
## SEATS & SEAT BELTS

### Seats and head restraints



#### Front seats (manual)

- ① **Seat position adjusting lever** Pull the lever up and slide the seat to the desired position.
- ② **Seatback angle adjusting lever** Lean forward and pull the lever up and lean back.
- ③ **Seat cushion angle adjusting knob** Turn the knob either way.
- ④ **Seat lumbar support adjusting lever** Pull the lever forward or backward.

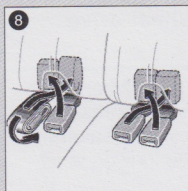


#### Front seats (power)

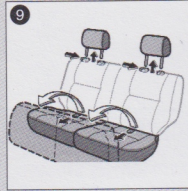
- ⑤ **Seat position and seat cushion angle adjusting switch** Move the control switch to the desired position.
- ⑥ **Seatback angle adjusting switch** Move the control switch to the desired position.
- ⑦ **Seat lumbar support adjusting switch** Push the switch in the desired direction.

continued

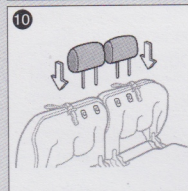
**Fold-down rear seats**



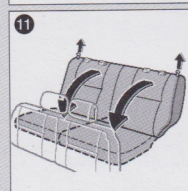
8 Stow the rear seat belts as shown.



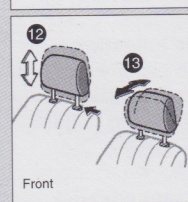
9 Swing the bottom cushion up by pulling the lock release strap. Remove the head restraint and pull the lock release strap.



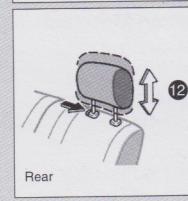
10 Store head restraints in the retaining hole in the bottom of the cushion.



11 Unlock the seatback and fold it down.

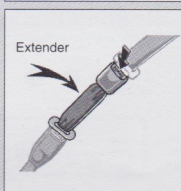
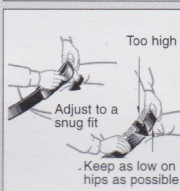
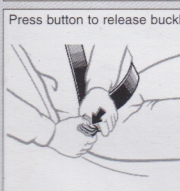
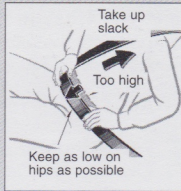
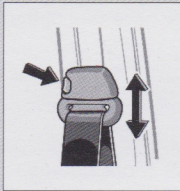
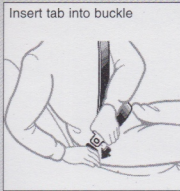


**Head restraints**  
12 Pull the restraint up to raise it. Press the lock release button and push the restraint down to lower.



13 Pull or push the restraint to move it forward or backward (on some models).

**Seat belts**



Refer to these illustrations and your *Owner's Manual* for more details. Seat belt extenders are also available from your Toyota dealer.

**CAUTION**

- The SRS airbag system is designed only as a supplement to the primary protection of the seat belt systems of the driver and front passenger. The front seat occupants are particularly susceptible to injury if they do not wear their seat belts; when sudden braking or a collision occurs, they may be thrown forward. To obtain maximum protection in an accident, the driver and all passengers in the vehicle should always wear their seat belts when driving because serious injuries or death can result to unrestrained occupants. For instructions and precautions concerning the seat belt system, see "Seat belts" in the *Owner's Manual*.
- Toyota strongly urges use of a proper child restraint system that conforms to the size of the child on the rear seat. According to accident statistics, the child is safer when properly restrained in the rear seat than in the front seat.
- Never use a rear-facing child restraint system in the front seat because the force of the rapid inflation of the passenger airbag can cause severe injury or death to the child.
- Unless it is unavoidable, do not install a forward-facing child restraint system on the front seat.
- If you must install a forward-facing child restraint system on the front seat, move the seat as far back as possible.
- Make sure that you have complied with all installation instructions provided by the child restraint manufacturer and that the system is properly secured.

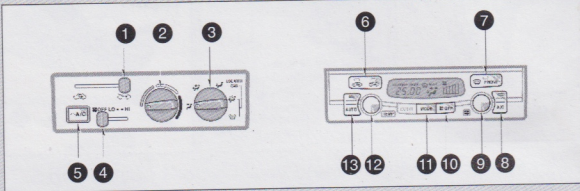
## Audio systems

Your new 4Runner may have one of the following components installed:

- AM-FM ETR radio/cassette player/compact disc player
- AM-FM ETR radio/cassette player

For complete operating instructions, refer to your *Owner's Manual* for more details.

## Air conditioning/heating

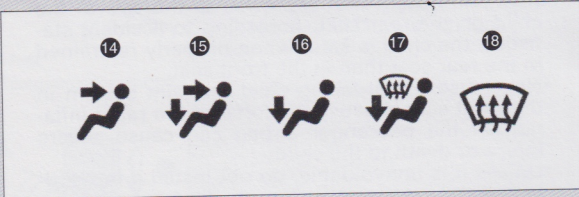


### Manual controls

- 1 Air intake selector
- 2 Temperature selector
- 3 Air flow selector
- 4 Fan speed selector
- 5 "A/C" button (on some models)

### Automatic controls

- 6 Air intake selector
- 7 Windshield air flow button
- 8 "A/C" button
- 9 Fan speed selector
- 10 "OFF" button
- 11 "MODE" button (air flow selector)
- 12 Temperature selector
- 13 "AUTO" button



In vehicles with automatic controls, push the "MODE" button to select vents for air flow. In vehicles with manual controls, to change the air flow source, select one of the following:

- 14 **Panel** Air flows from instrument panel vents.
- 15 **Bi-level** Air flows from floor and panel vents.
- 16 **Floor** Air flows from floor vents.
- 17 **Floor/windshield** Air flows from floor and windshield vents.
- 18 **Windshield** Air flows from windshield vent.

## Recommended settings

### Heating (manual)

- Fan speed** Any setting except "OFF"
- Temperature** Towards WARM (red zone)
- Air intake** FRESH (outside air)
- Air flow** FLOOR
- Air conditioning** OFF

### Heating (automatic)

- Press "AUTO" button
- Temperature** Towards the desired temperature
- Air intake** FRESH (outside air)
- Air conditioning** OFF

### Air conditioning (manual)

- Fan speed** Any setting except "OFF"
- Temperature** Towards COLD (blue zone)
- Air intake** FRESH (outside air)
- Air flow** PANEL
- Air conditioning** ON

### Air conditioning (automatic)

- Press "AUTO" button
- Temperature** Towards the desired temperature
- Air intake** FRESH (outside air)
- Air conditioning** ON

### Ventilation (manual)

- Fan speed** Any setting except "OFF"
- Temperature** Towards COLD (blue zone)
- Air intake** FRESH (outside air)
- Air flow** PANEL
- Air conditioning** OFF

### Ventilation (automatic)

- Press "AUTO" button
- Temperature** Towards COLD
- Air intake** FRESH (outside air)
- Air conditioning** OFF

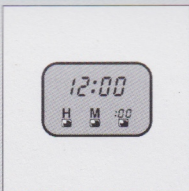
### Defogging/defrosting (manual)

- Fan speed** Any setting except "OFF"
- Temperature** Towards WARM (red zone) to heat; COLD (blue zone) to cool
- Air intake** FRESH (outside air)
- Air flow** WINDSHIELD

### Defogging/defrosting (automatic)

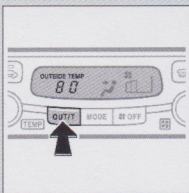
- Temperature** Towards WARM (red zone) to heat; COLD (blue zone) to cool
- Air intake** FRESH (outside air)
- Air flow** WINDSHIELD

For complete operating instructions, refer to your *Owner's Manual* for more details.



To reset the hour Push the "H" button.  
To reset the minutes Push the "M" button.

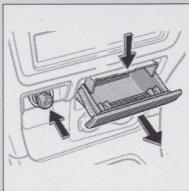
### Outside temperature display (if installed)



**Temperature** Turn the key "ON". Push "OUT/T" to turn the outside temperature display on or off.

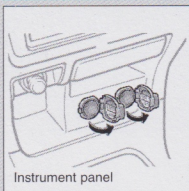
Refer to your *Owner's Manual* for more details.

### Cigarette lighter & ashtray



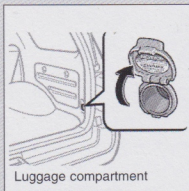
Refer to this illustration and your *Owner's Manual* for more details.

### Power outlets

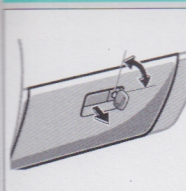


Instrument panel

To use the power outlets for car accessories Turn the key to "ACC" or "ON".

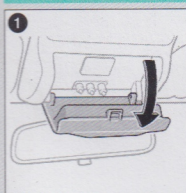


Luggage compartment

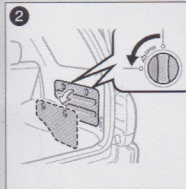


To open Pull the lever.  
To lock Insert the master key and turn it clockwise.

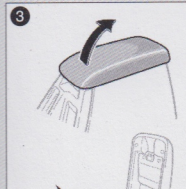
### Auxiliary holder & box



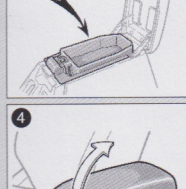
1 Open the lid as shown.



2 To open Turn the two knobs.



3 **Upper tray** Raise the console box lid without touching the lock release lever.



4 **Console box** Pull the lock release lever while raising the console box lid.

## Warranty coverage

Use this chart to review the basic elements of the warranty coverage for your vehicle. Refer to your Owner's Warranty Information booklet for the complete statement of your warranty.

	Months in service	Miles in service
<b>New Vehicle Limited Warranty</b>		
Basic	36	36,000
Powertrain	60	60,000
Restraint system	60	60,000
Corrosion perforation	60	unlimited
<b>Federal Emission Warranty</b>		
Performance	24	24,000
Specific components	96	80,000
Defect	36* <sup>1</sup>	36,000* <sup>1</sup>
Specific components	96	80,000
<b>California Emission Control Warranty*<sup>2</sup></b>		
Performance	36	50,000
Short-term defect	36* <sup>1</sup>	50,000* <sup>1</sup>
Long-term defect	84	70,000

\*<sup>1</sup> Specific components may have longer coverage under terms of the Powertrain Warranty.

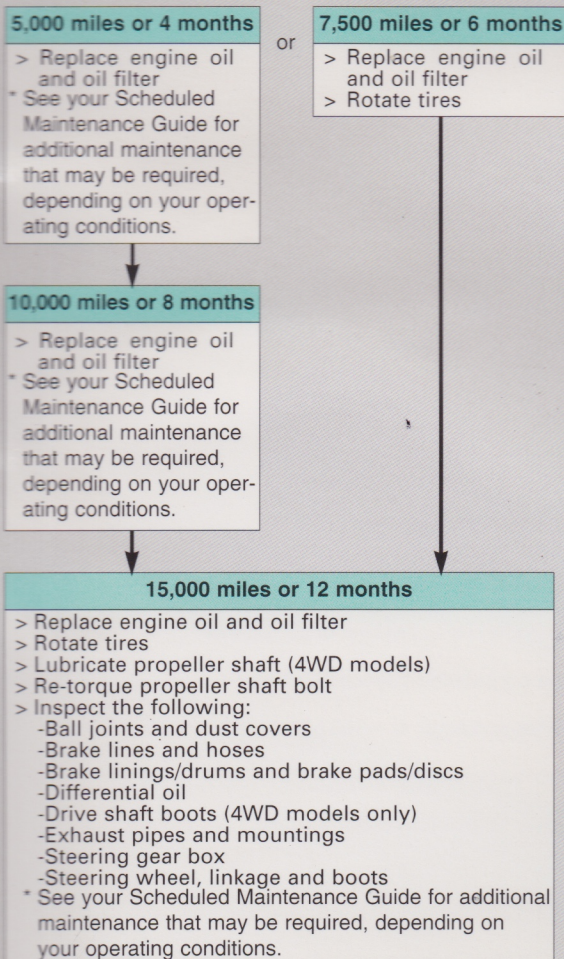
\*<sup>2</sup> Also applies to a Massachusetts vehicle equipped with a California Certified Emission Control System. Vehicles covered by this warranty are also covered by the Federal Emission Control Warranty.

A brief summary of the first-year vehicle maintenance schedule is provided here. Review your *Scheduled Maintenance Guide* for more details.

The *Scheduled Maintenance Guide* offers you the flexibility to follow either 5,000-mile or 7,500-mile oil change intervals, depending on your circumstances.

**Use the 5,000-mile guidelines** if you primarily operate your Toyota under prescribed "Special Operating Conditions" (e.g., towing a trailer, using a camper or car-top carrier, operating on rough or unpaved roads, extensive low-speed or short-distance driving, etc.).

**Use the 7,500-mile guidelines** if you primarily operate your Toyota under light, non-commercial duty.



SEATS & SEAT BELTS  
AUDIO & AIR CONDITIONING/HEATING  
OTHER EQUIPMENT  
ENGINE COMPARTMENT  
WARRANTY COVERAGE & SCHEDULED MAINTENANCE